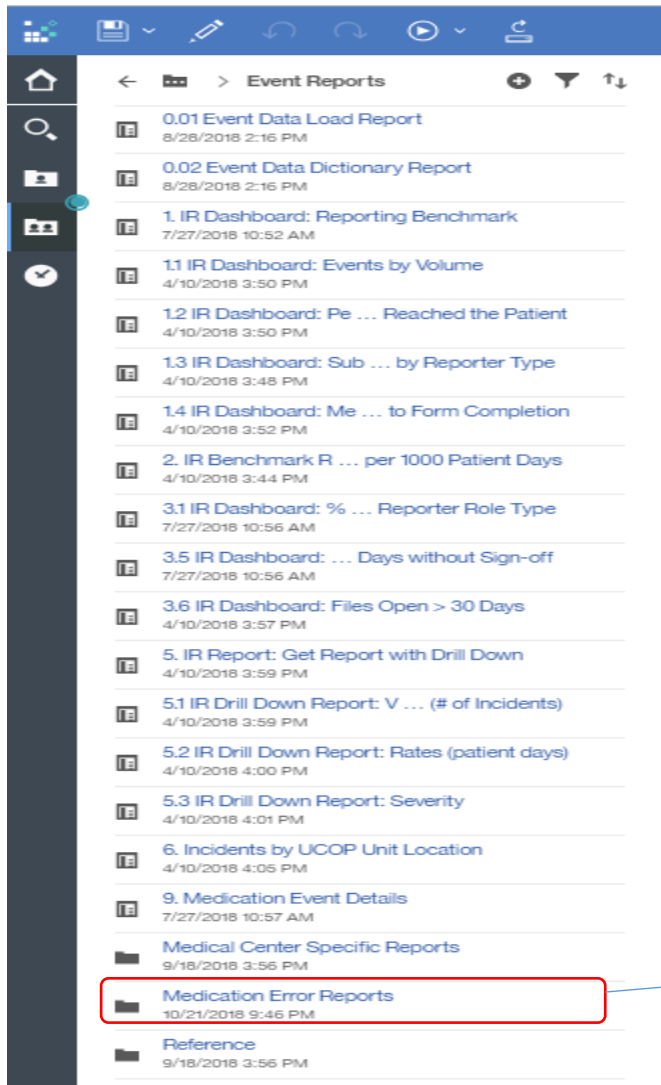


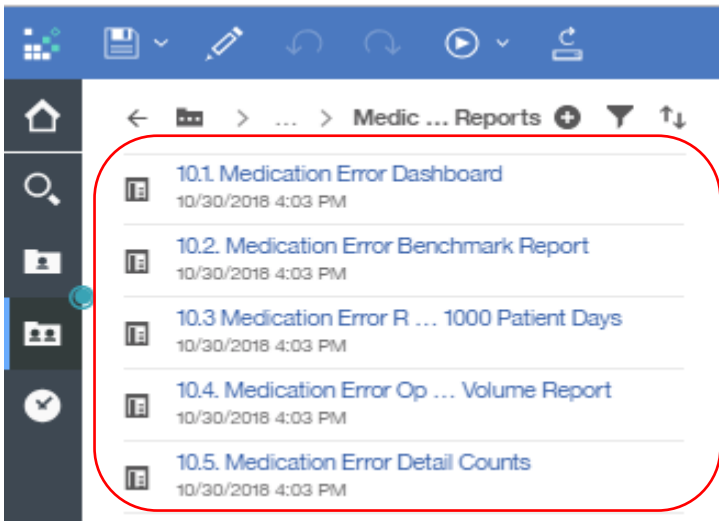
Medication Error Reports

- Medical error reports folder contains benchmark and organizational reports on medication error data.
- Medication error reports folder is created under Event Reports folder.
- Screenshots are below.



Medication error reports

Medication Error Reports folder



Medication Error Reports

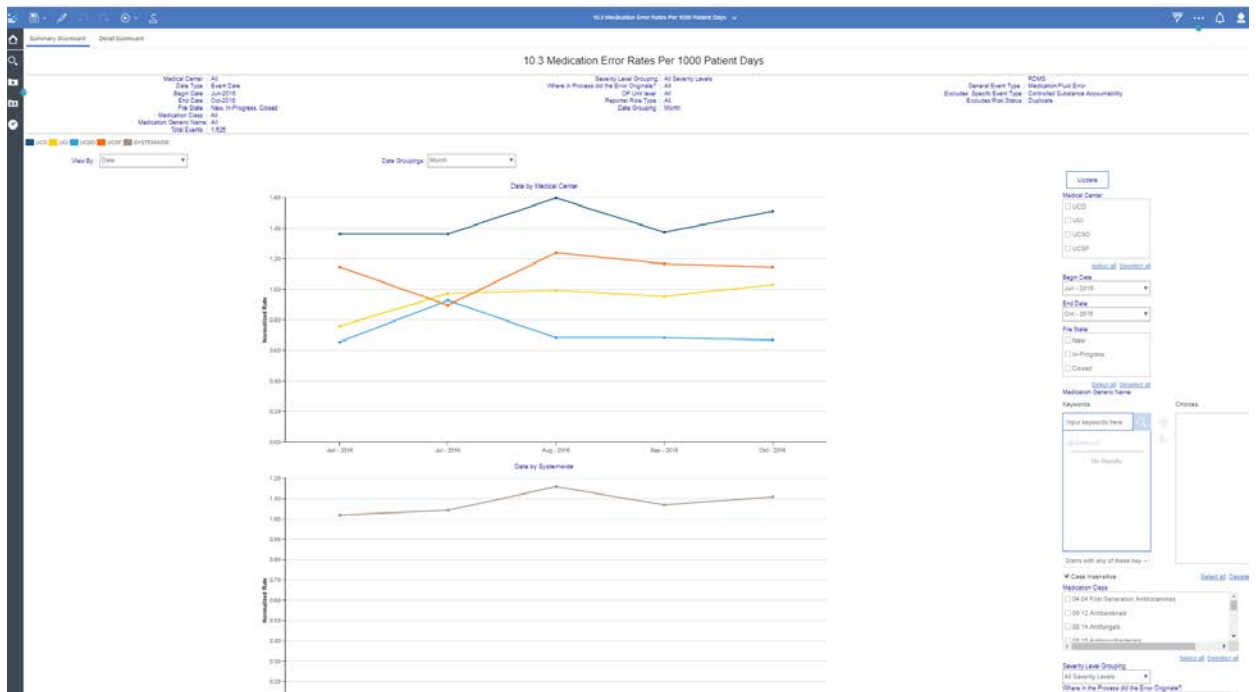
10.1 Medication Error Dashboard



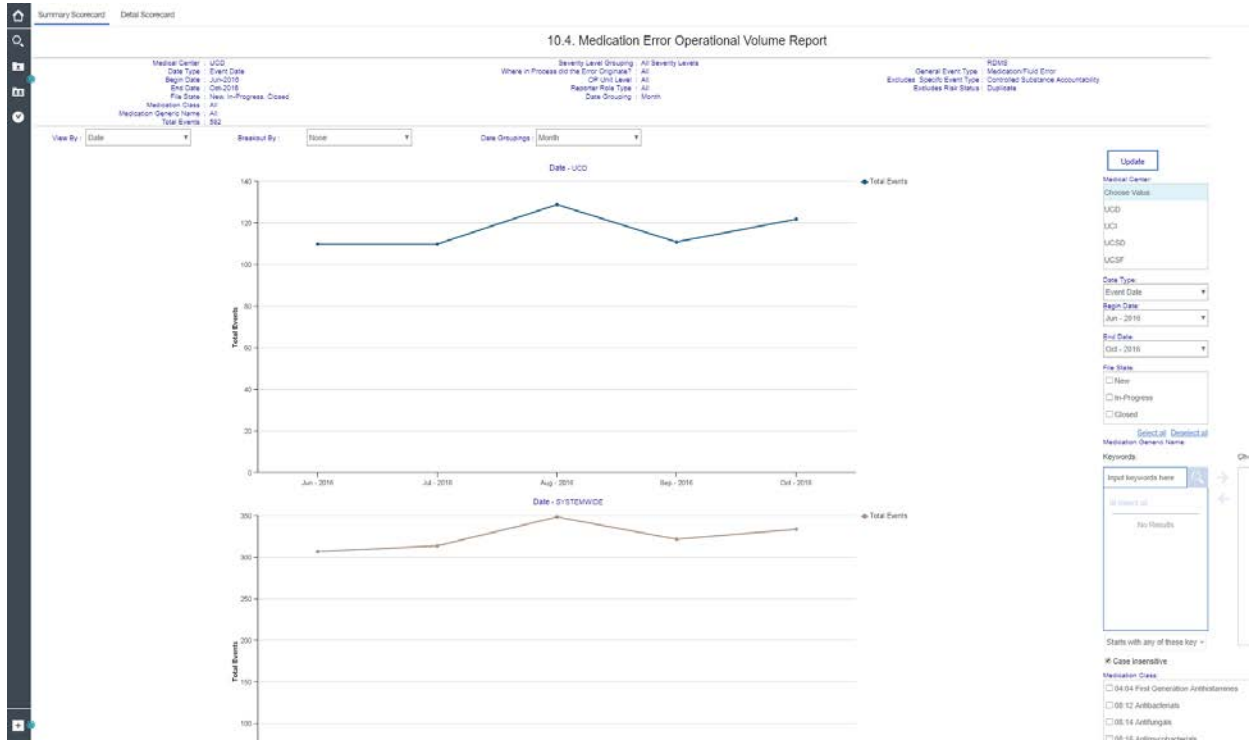
10.2 Medication Error Benchmark Report



10.3 Medication Error Rates Per 1000 Patient Days



10.4 Medication Error Operational Volume Report



10.5 Medication Error Detail Counts

10.5. Medication Error Detail Counts

Medical Center: All
 Date Type: Event Date
 Begin Date: Jun-2016
 End Date: Aug-2016
 File Size: All
 Medication Class: All
 Medication Generic Name: All
 Total Events: 2,301

Severity Level Grouping: All Severity Levels
 Where in Process did the error originate?: All
 CIP Unit Level: All
 Reporter Role Type: All

General Event Type: Medication/Fluid Error
 Exclude Specific Event Type: Controlled Substance
 Exclude Risk Status: Duplicate

Max Category: Where in the process did the error originate? | Detail: Medication Generic Name

Where in the process did the error originate?	Medication Generic Name	UCD	UCI	UCSD	UCSF	SYSTEMWIDE
Administration	Total	289	105	157	274	825
	0.4% Sodium Chloride	1	1	1		
	5% Sodium Chloride 500ml					1
	Acetaminophen	8	1	1	8	
	Acetaminophen, Diphenhydramine	1				1
	Acetylsalicylic Acid	1	1	1		
	Albuterol					1
	Apixitase Beta (abiraterone)	1				1
	Albumin Human			3	3	
	Albuterol			3	3	
	Alprazolam			1	1	
	Alprazolam			1	1	
	Alprazolam			1	1	
	Alteplase, Recombinant	1				1
	Alteplase, Recombinant, Conase	1				1
	Ata	1				1
	Amilorone	1				1
	Amoxicillin	1				1
	Amoxicillin	1				1
	Amphetamine			1	1	
	Amphetamine D			1	1	
	Amphetamine B Liposomal			1	1	
	Amoxicillin	1	1	2		

Update

Medical Center:
 UCD
 UCI
 UCSD
 UCSF

Data Type: Event Date
 Begin Date: Jun - 2016
 End Date: Aug - 2016
 File Size:
 New
 In-Progress
 Closed

Select All | Deselect All
 Medication Generic Name

Keywords:
 Input keywords here
 No Results

Starts with any of these key -
 Case Inactive

Select All | Deselect All

Top how many header bug fix

10. Top Operational Counts by Divisions or Units.

The screenshot shows a report titled '10. Top Operational Counts by Divisions or Units'. The sub-report is '10. Top 150 Units by Total Number of Issues'. The table lists various units and their corresponding issue counts. The 'Units' column includes entries like 'Broadway Building', 'Cancer Center Clinics', 'Dermatology Clinic - C Street', etc. The 'Classification' column shows 'Assistance' or 'Appeal', and the 'File State' column shows 'Closed'. The 'Total Issues' column shows counts ranging from 1 to 84.

Units	Classification	File State	Total Issues
Broadway Building	Assistance	Closed	1
Cancer Center Clinics	Assistance	Closed	2
Carmichael Network	Assistance	Closed	1
Dermatology Clinic - C Street	Assistance	Closed	1
ENT/Temporal Medicine T4	Assistance	Closed	1
Gastrointestinal Clinic	Assistance	Closed	2
General Medicine Clinic	Assistance	Closed	1
Infectious Diseases Clinic or Infectious and Immunologic Diseases Clinic	Assistance	Closed	1
Main Operating Room Pavilion 3rd floor	Assistance	Closed	1
Neonatal Units NICUSCN D5	Assistance	Closed	1
Non-patient Care	Appeal	Closed	84
Non-patient Care	Assistance	Closed	14
OB/GYN - ACC	Assistance	Closed	1
Orthopedic Clinic	Assistance	Closed	1
Other	Assistance	Closed	1
Patient Relations	Assistance	Closed	30
Pediatric Hematology/Oncology Clinic	Assistance	Closed	1
Psychiatry Clinic	Assistance	Closed	1
Pulmonary Clinic	Assistance	Closed	1
Roseville Network	Assistance	Closed	1
Unlisted Site	Assistance	Closed	1

10. Top Operational Counts by Divisions or Units.

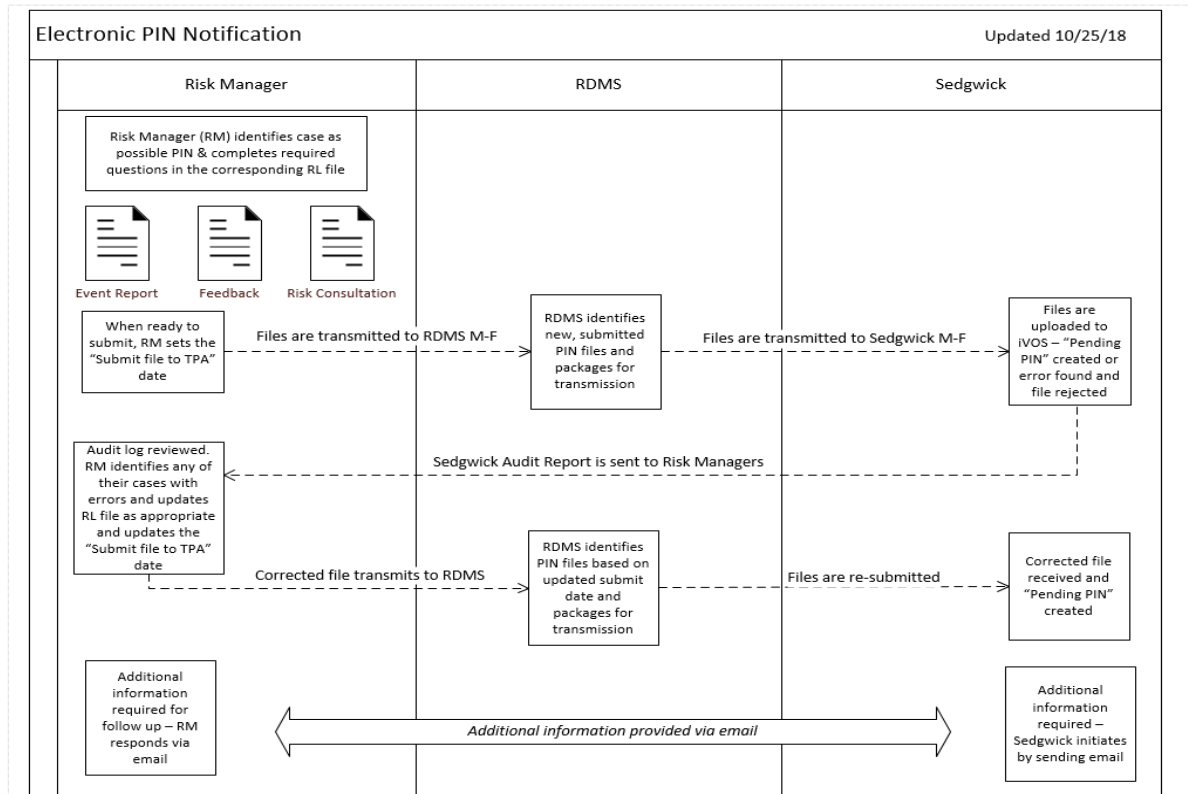
Top how many header bug fix

The screenshot shows a report titled '10. Top Operational Counts by Divisions or Units'. The sub-report is '10. Top 150 Divisions by Total Number of Issues'. The table lists various divisions and their corresponding issue counts. The 'Divisions' column includes entries like 'Academic Clinics', 'Bed Control', 'Dermatology', 'Discharge Planning', etc. The 'Classification' column shows 'Assistance' or 'Appeal', and the 'File State' column shows 'Closed'. The 'Total Issues' column shows counts ranging from 1 to 88.

Divisions	Classification	File State	Total Issues
Academic Clinics	Assistance	Closed	5
Bed Control	Assistance	Closed	1
Dermatology	Assistance	Closed	1
Discharge Planning	Assistance	Closed	1
Financial Services	Assistance	Closed	1
Gastroenterology and Hepatology	Assistance	Closed	1
General Pediatrics	Assistance	Closed	1
Gynecological Oncology	Assistance	Closed	1
Hematology and Oncology	Assistance	Closed	1
Home Care/Hospice	Assistance	Closed	1
Infectious Diseases	Assistance	Closed	1
Marketing	Assistance	Closed	1
Member Services / Claims	Appeal	Closed	4
Member Services / Claims	Assistance	Closed	1
Network & Affiliates	Assistance	Closed	3
Neurology	Assistance	Closed	1
Nursing	Assistance	Closed	1
Private Room Request - General	Assistance	Closed	2
Psychiatry	Assistance	Closed	1
Restricted Patient	Assistance	Closed	26
SSP Patient	Assistance	Closed	1
UM Case Management	Assistance	Closed	9
UM Quality of Care	Appeal	Closed	88
Unknown	Assistance	Closed	2

RDMS Sedgwick Pin File Extract

- The UCOP RDMS created a new daily ETL process (Monday through Friday) to extract the required PIN data from the RDMS system and create a Sedgwick PIN file.
- Sedgwick will use this file to create new Pending PIN records in the iVOS system.
- Below is the screenshot for process flow diagram.



Other Notes

- RDMS Cognos reports are best viewed in Internet explorer. Users may see some issues while using other browsers such as Chrome or Firefox. **As such the recommended browser is IE.**